

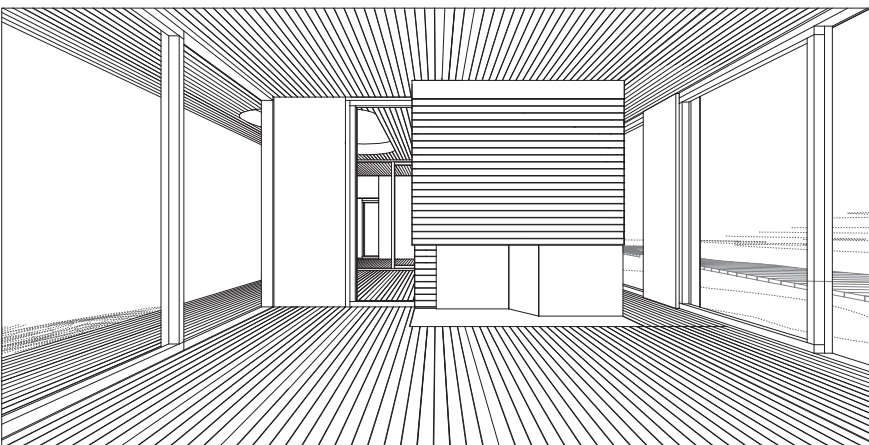


Existing topography and landscape

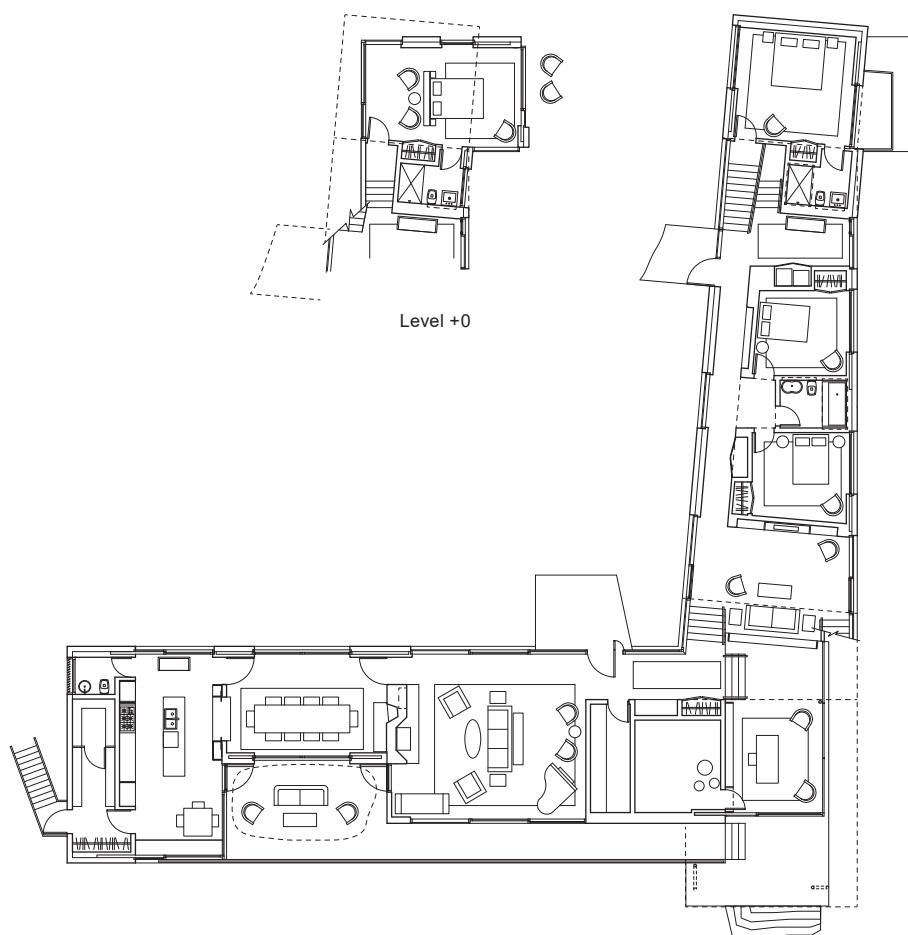
**House in Maine, Northeast Harbor, 2008.** A house adjacent to Acadia National Park. The L-shaped building is configured to follow the ground contours and delineate public and private zones. Wood clad structurally insulated panels (SIP) and large floor to ceiling operable windows and doors create a rhythm of open and closed exposure to the natural setting. The project was canceled amidst the 2008 financial crisis.

**Designer,** Schematic Design - Design Development including a contractor "pricing" set.

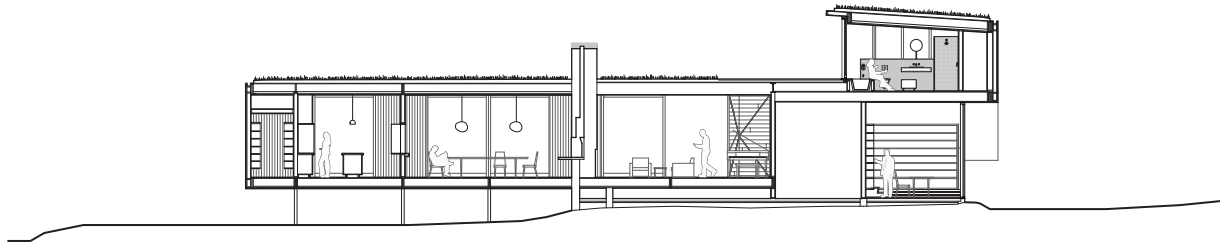
**GOA Gray Organschi Architecture**  
4,500 SF (235 SQM)



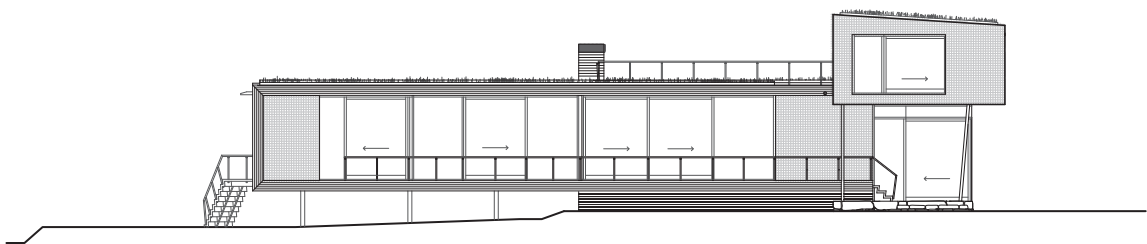
Interior perspective at living room



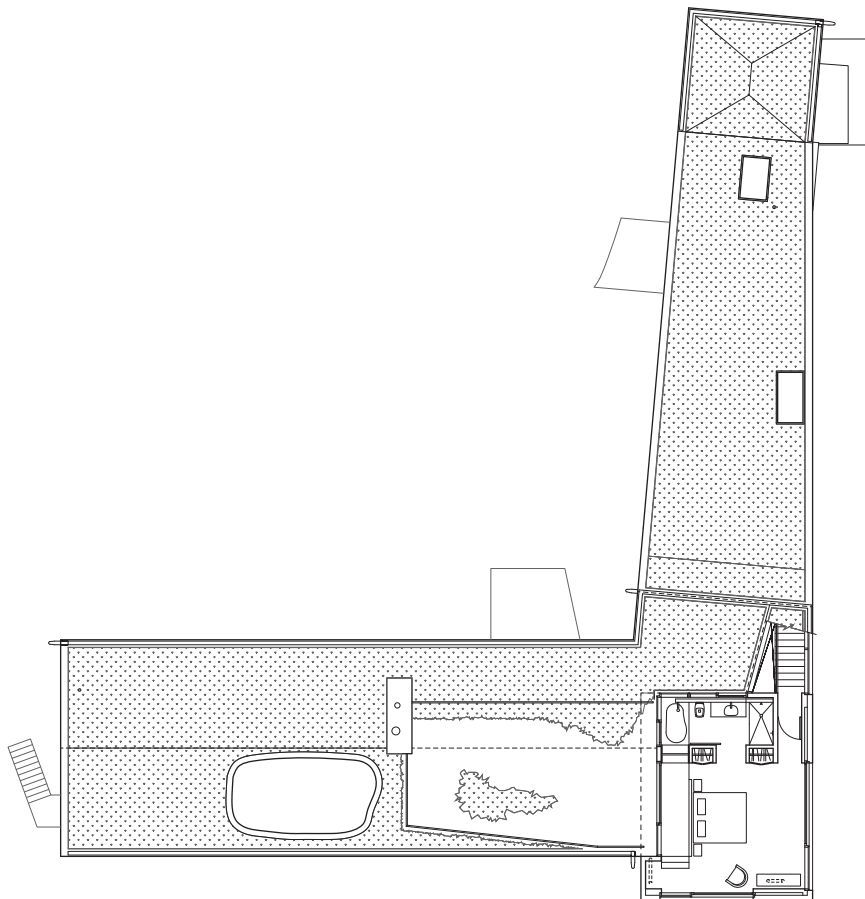
Level +1 Plan



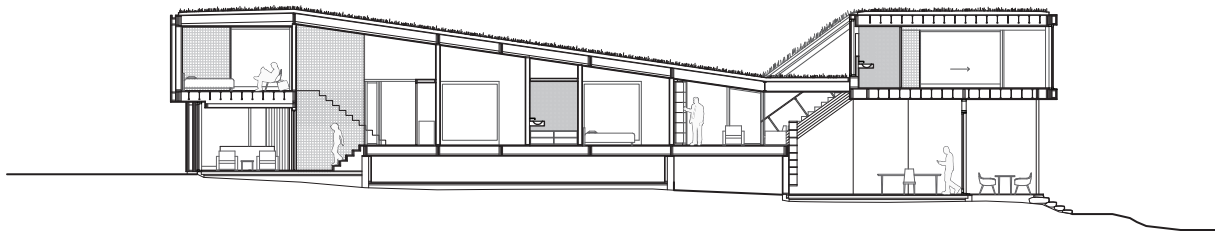
Section at pantry, kitchen, dining, living, storage, study and master suite



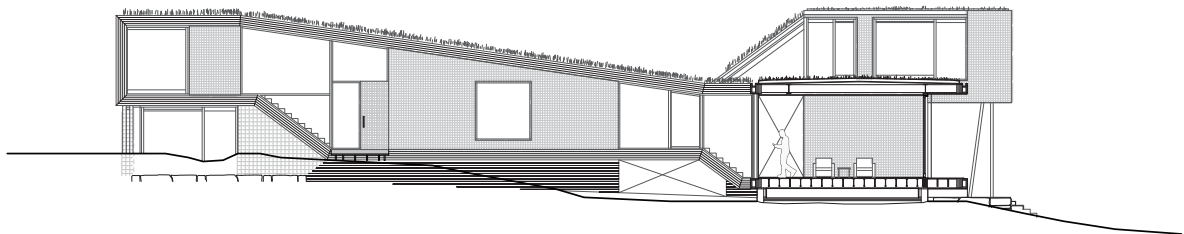
South Elevation



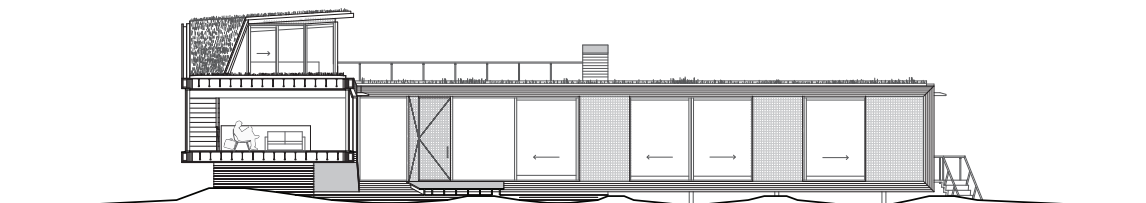
Level +2 Plan



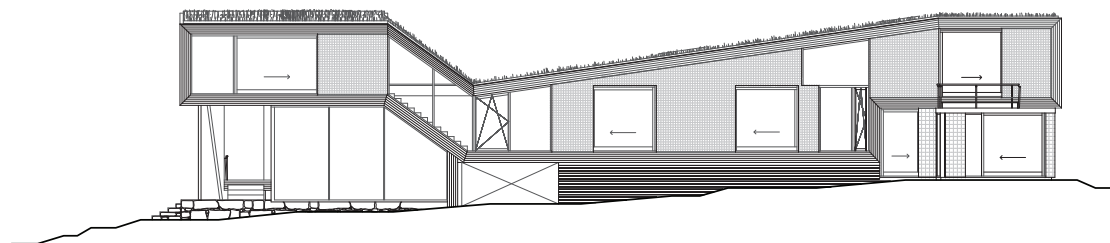
Section at bedroom wing



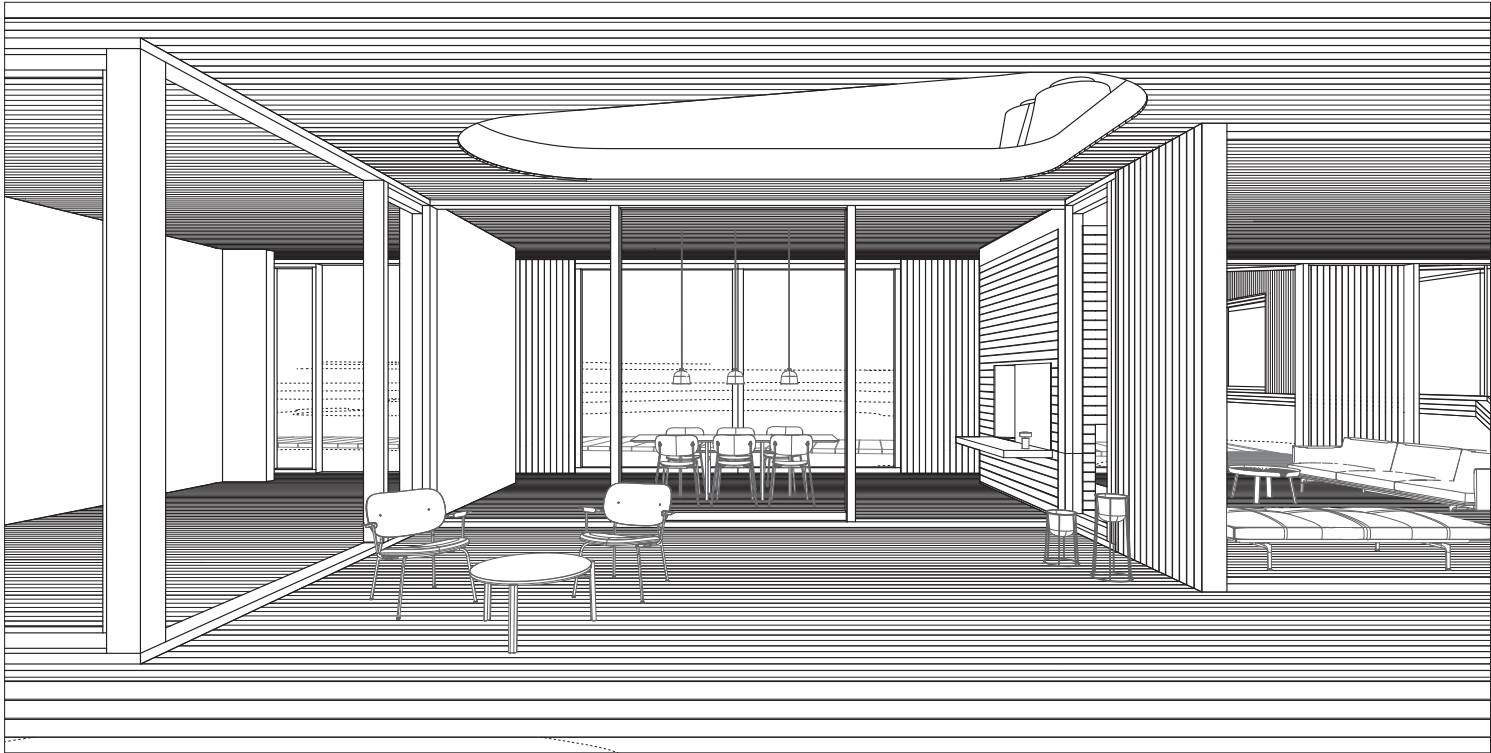
Section at living room (west facade)



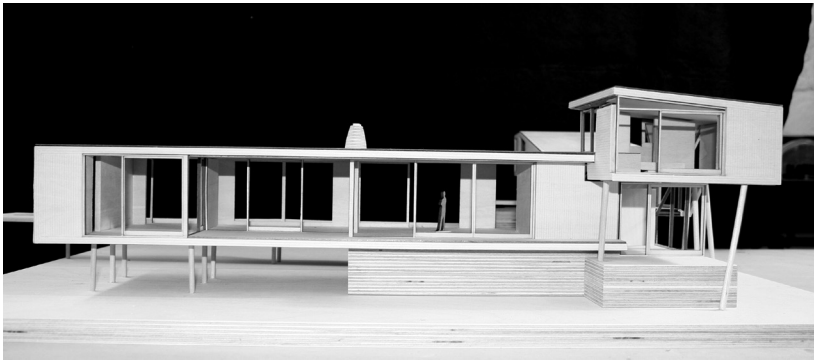
Section at study (north entry elevation)



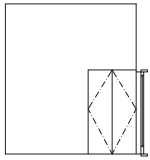
East elevation



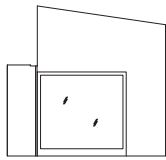
View at outdoor deck, toward dining room



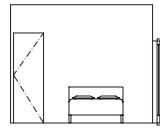
Model at south elevation



Bedroom 1 N



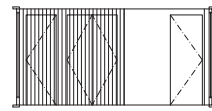
Upper bedroom N



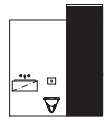
Bedroom 2 N



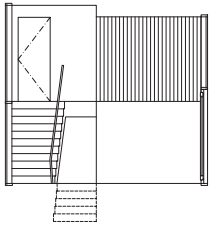
Shared bath N



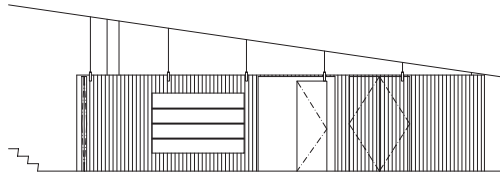
Lower bedroom N



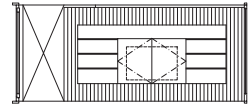
en suite N



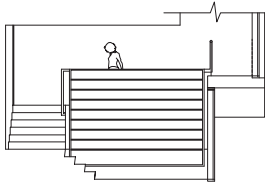
Bedroom nook N



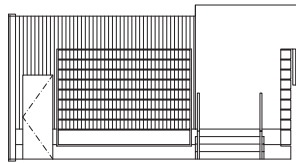
Bedroom hall E



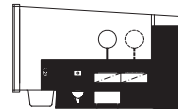
TV room N



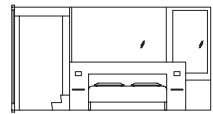
Study N



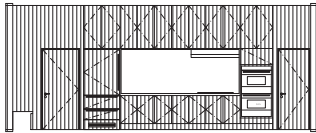
Study W



Master bath W



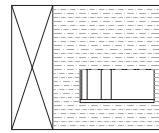
Master bedroom N



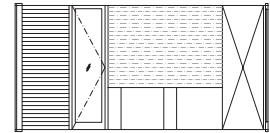
Kitchen W



Kitchen E

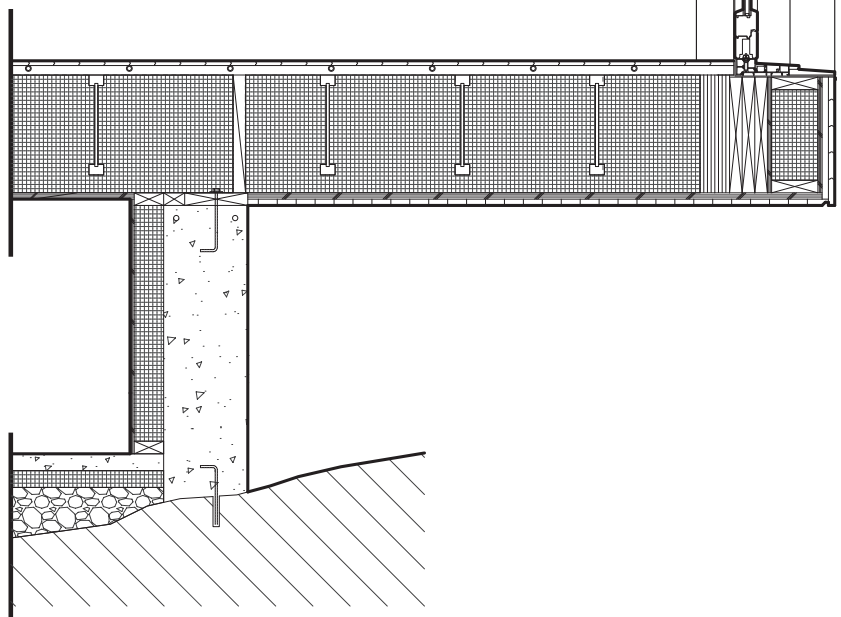
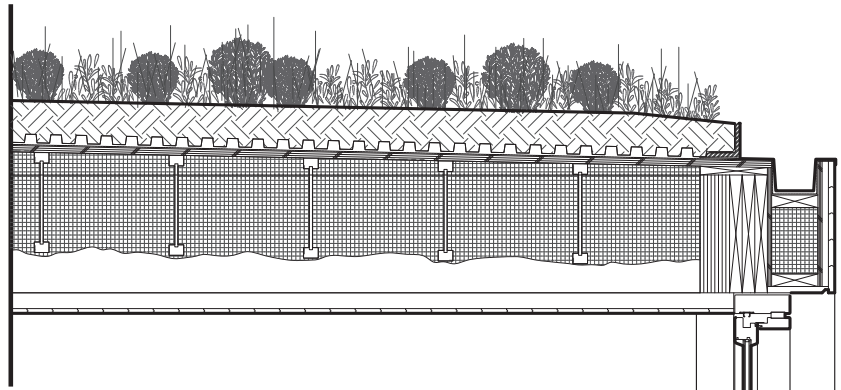


Dining E



Living W





Wall Section at Living room  
Interior axonometry (*opposite*)